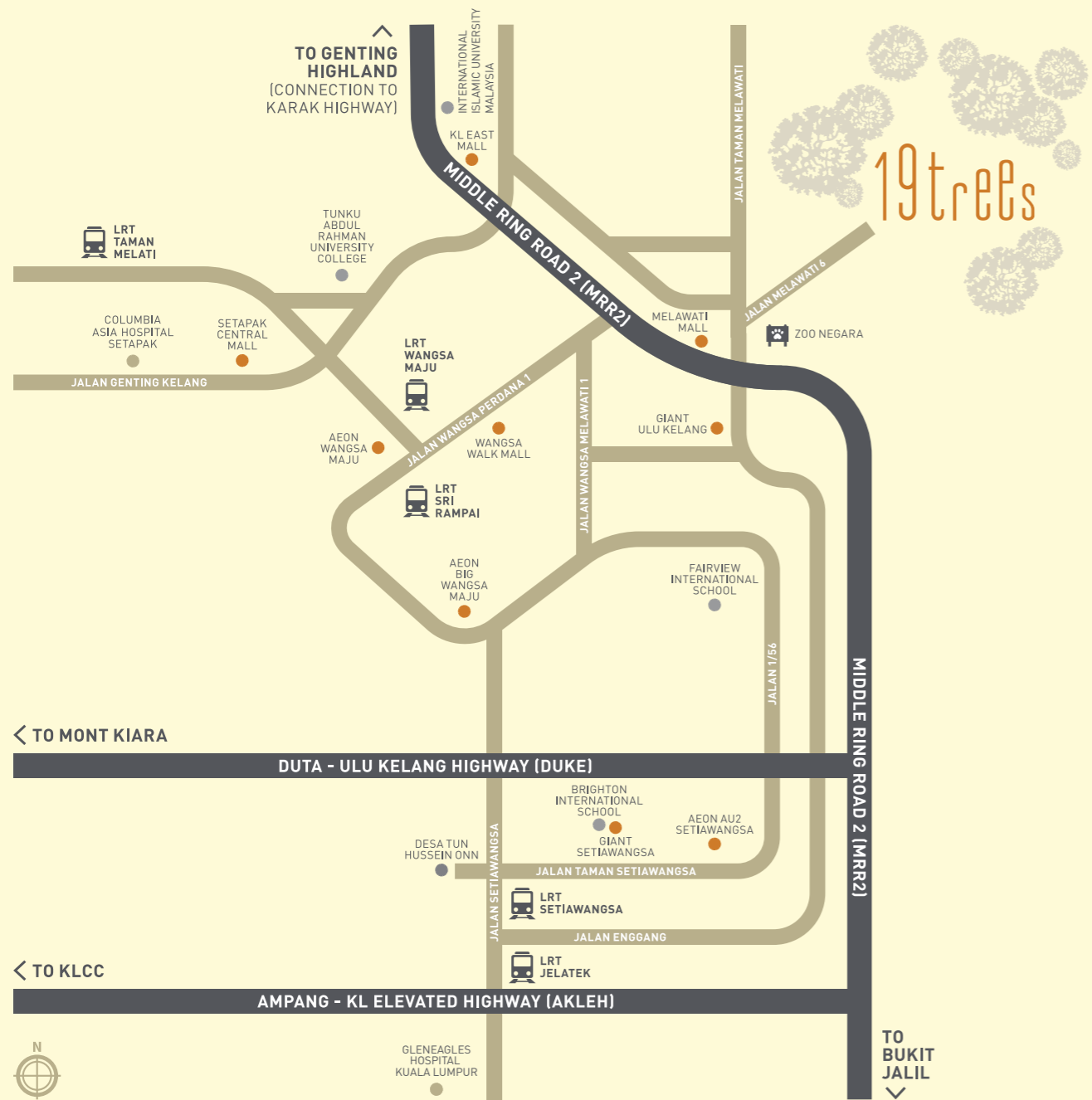


# Location Map



Engage with us  
**03 92128333**

[www.sdb.com.my](http://www.sdb.com.my)  
f selangordredgingberhad



Type of Development: Strata Terraced • Developer: SDB Properties Sdn Bhd, Co.No. 198901012746 (190055-A), Level 18, West Block, Wisma Golden Eagle Realty, 142-C Jalan Ampang, 50450 Kuala Lumpur • Tel: +603-2711 2288 • Developer's License: 9500/07-2027/0889(A) • Validity Period: 14/07/2021 - 13/07/2027 • Advertising and Sales Permit: 9500-7/09-2025/0198(A)-(S) • Validity Period: 27/09/2022 to 26/09/2025 • Expected Date of Completion: September 2025 • Total Unit: 222 units • Selling Price: Block A - RM2,534,800 (Min.) to RM2,753,800 (Max.), 7 unit; Block B - RM2,476,800 (Min.) to RM2,763,800 (Max.), 7 unit; Block C - RM2,476,800 (Min.) to RM2,763,800 (Max.), 12 unit; Block D - RM1,607,800 (Min.) to RM2,542,800 (Max.), 30 unit; Block E - RM1,530,800 (Min.) to RM2,212,800 (Max.), 38 unit; Block F - RM1,498,800 (Min.) to RM2,094,800 (Max.), 36 unit; Block G - RM1,507,800 (Min.) to RM2,330,800 (Max.), 38 unit; Block H - RM1,542,800 (Min.) to RM2,577,800 (Max.), 26 unit and Block I - RM1,530,800 (Min.) to RM2,479,800 (Max.), 28 unit • Approving Authority: Majlis Perbandaran Ampang Jaya • Building Plan No.: MPAJ.BS.KB.740-1/2/03/2022 • Tenure of Land: Leasehold 99 Years (Expiry : 30/06/2115) and Freehold • Restriction in Interest : This land may be transferred, leased, or charged with consent of State Authority • Bumiputra Discount: 7%

Disclaimer: All information contained herein including visual, illustrations, specifications, furniture and fittings layout and presentation of show units are subject to change as may be required by the Developer's consultants and/or relevant authorities and cannot form part of an offer or contract for the sale and purchase of any unit. While every reasonable care has been taken in providing this information, the developer or its agent cannot be held responsible for any inaccuracies. Illustrations and pictures in the printed materials are computer-generated artists' impressions only and are meant to give an approximate idea of the development. All items or plans are subject to variation, modifications, amendments and substitution as may be recommended by Developer's consultants and/or relevant authorities.

# 19trees



A Uniquely Gated & Guarded  
Multigenerational Home,  
Perfect for Your Family.



TYPE CG LIVING AREA



# Built for You, Designed for Life

**DEVELOPER**  
SDB Properties Sdn Bhd

**SITE AREA**  
14 acres

**TENURE**  
Leasehold

## DEVELOPMENT

Serene and sophisticated, 19Trees is an urban sanctuary nestled within a lush tropical landscape. The 14-acre development comprises 222 units of exquisitely designed strata terrace houses, all within a gated and guarded community in Taman Melawati, Kuala Lumpur. 19Trees is built for now and for generations to come.

## FACILITIES PLAN

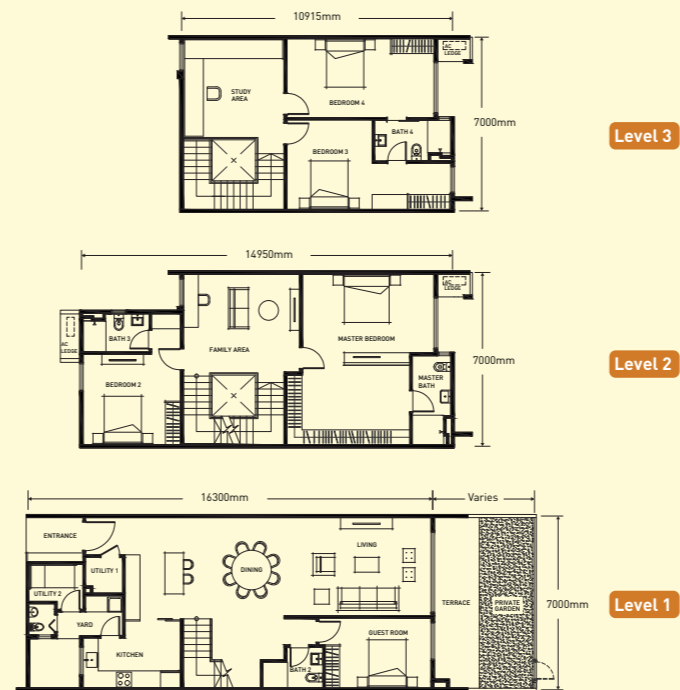
Supporting an active lifestyle with ample outdoor spaces and greeneries. For the well-being of the 19Trees community - both now and in the future.

- 1 MAIN ENTRANCE
- 2 JOGGING PATH
- 3 GUPPY POND & HERBS GARDEN
- 4 CLUBHOUSE (Gym, Function Room, 25m Lap Pool, Children's Pool)
- 5 TREKKING TRAIL
- 6 CHILDREN'S PLAYGROUND
- 7 HALF BASKETBALL COURT
- 8 BADMINTON COURT/MULTI-PURPOSE HALL



## Type C Garden

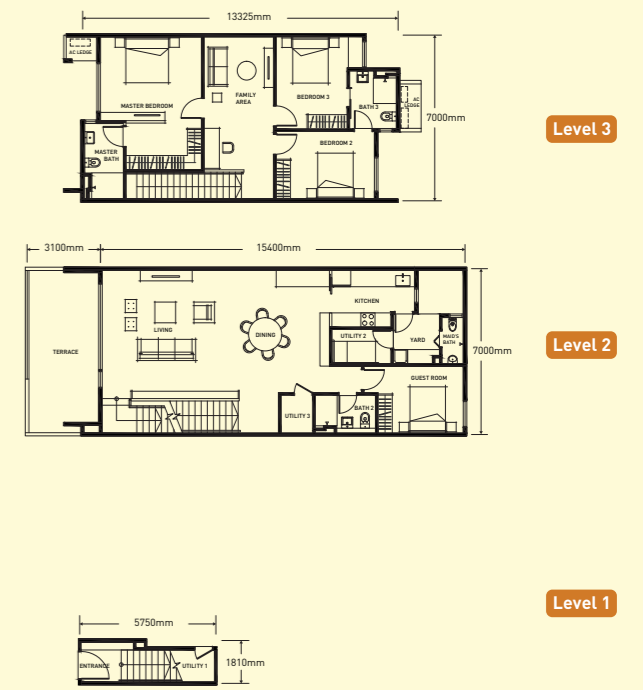
- 3,197 – 4,198 sqft
- 1 Family Area
- 5+1 Bedrooms
- 1 Study Area
- 4+1 Bathrooms



\*For reference only, not to scale. Garden gate is applicable to selected units.

## Type F

- 2,508 – 2,756 sqft
- 3+1 Bathrooms
- 4+1 Bedrooms
- 1 Family Area



\*For reference only, not to scale.



Gated and Guarded



Minimum 3 Covered Car Park



Lap Pool & Children's Pool



Half Basketball Court



Badminton Court